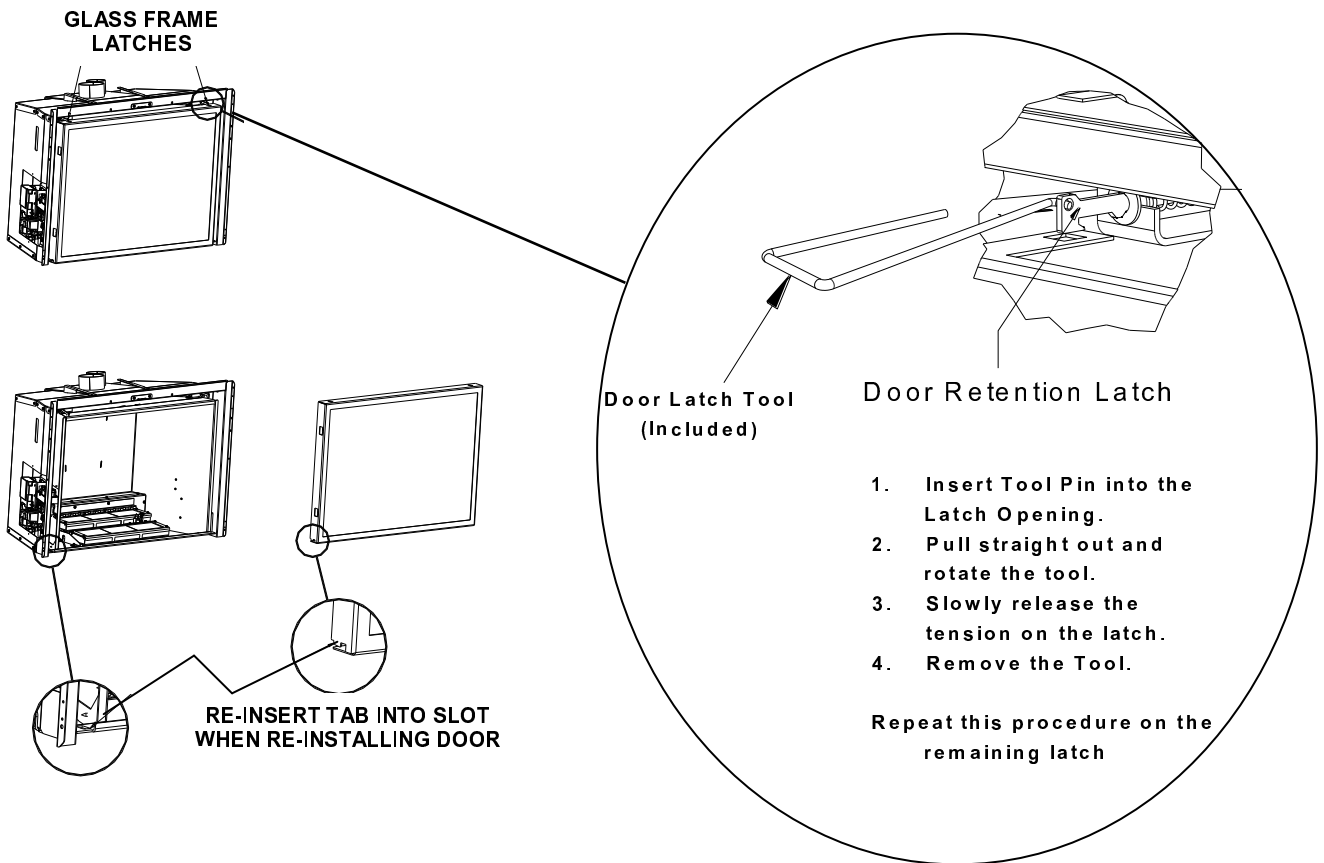
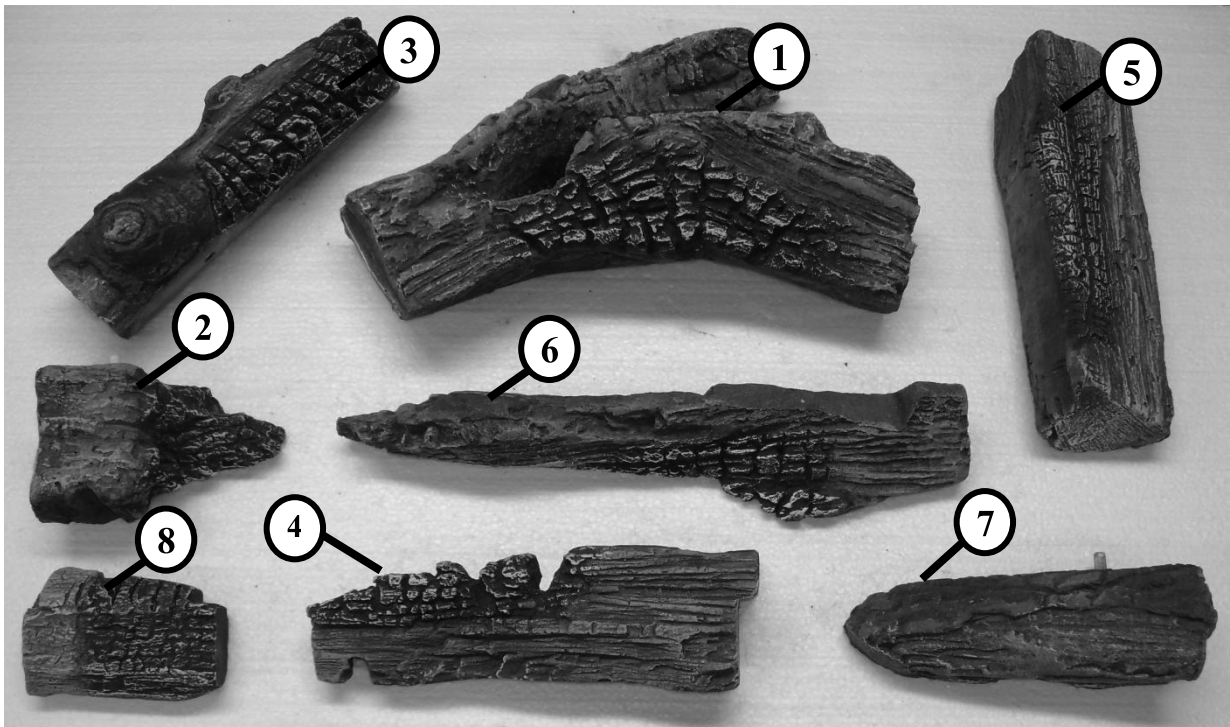


DOOR REMOVAL AND REPLACEMENT



LOG SET, COALS AND EMBERS INSTALLATION INSTRUCTIONS

Remove the foam log package from the fireplace, and carefully unpack the logs and set aside:





Place grate over burners as shown above. Tear apart some of the fiber embers into approximately quarter size pieces and place loosely at the rear edge of the back burner and in the gap between the front and rear burner as shown.



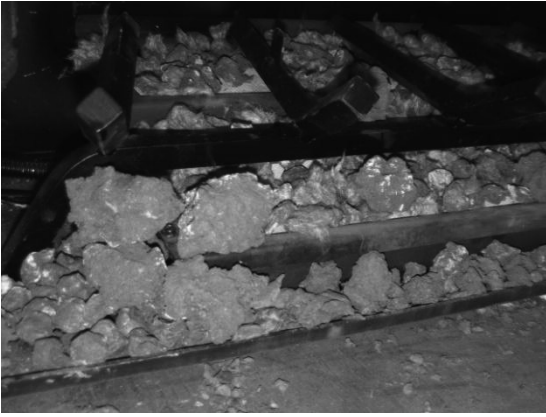
Tear some additional fiber embers into dime to nickel size pieces and loosely place them onto burners as shown. Take care not to cover the pilot – shown in circle above.



Scatter loosely some of the smaller grey and black coals on top and among the fiber embers.



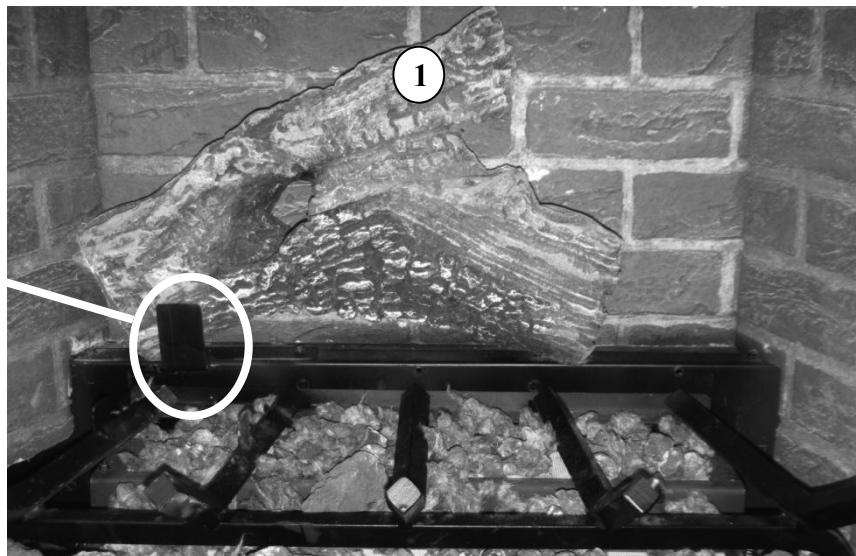
Tear up additional fiber embers and loosely place one more layer of embers on both burners.



Decorate left and right ends of burners with the larger coals, to hide the burners. The remaining smaller grey and black coals may be used to fill in the floor in front and at both ends of burners.

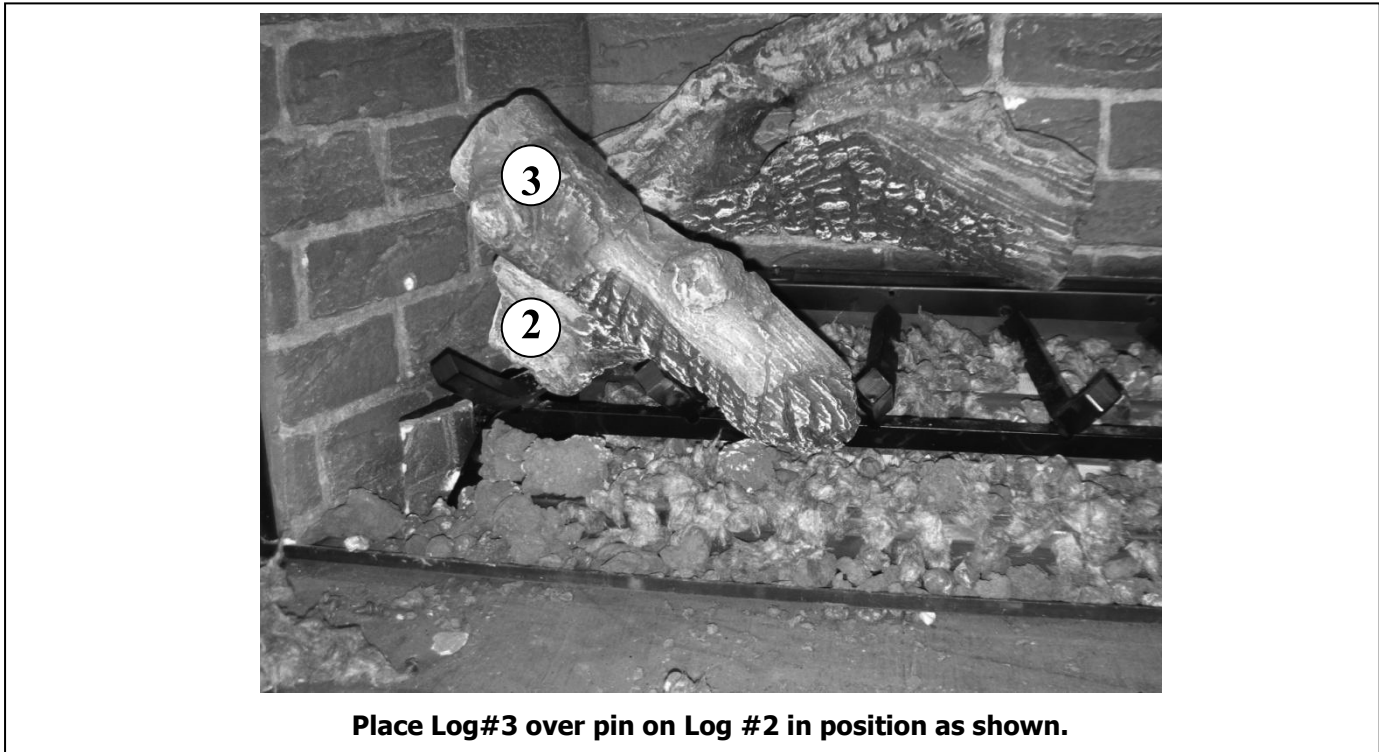
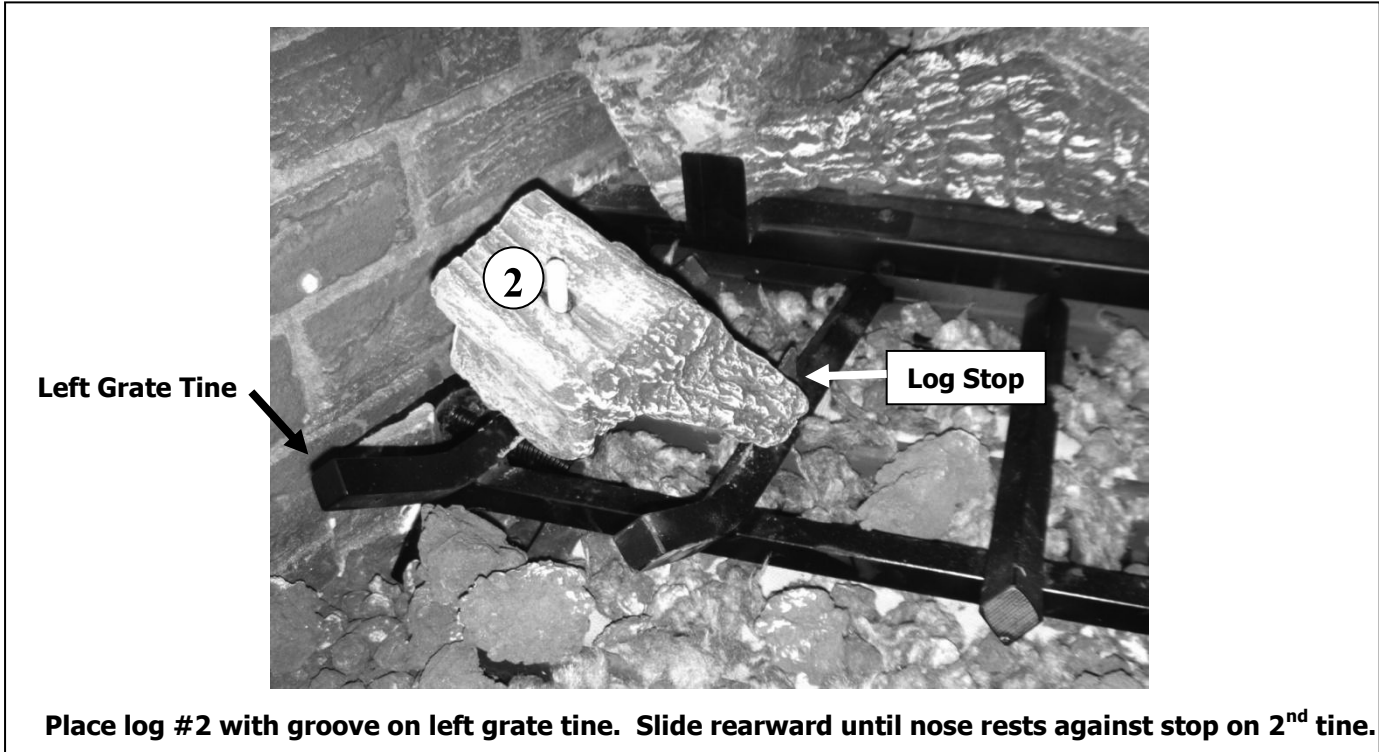


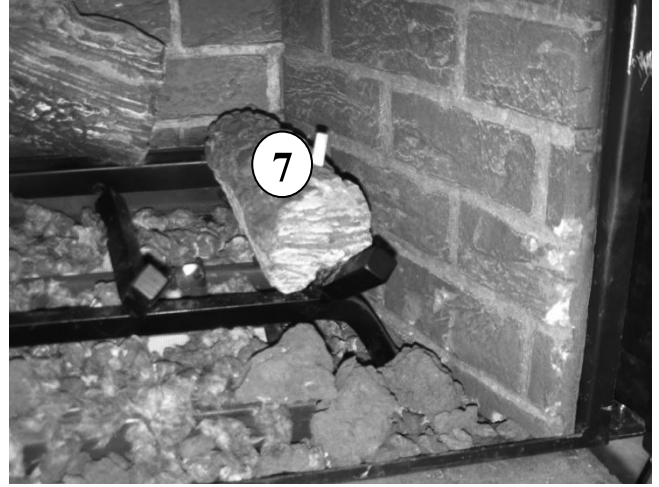
Use the remaining fiber embers to scatter over edges of burner.



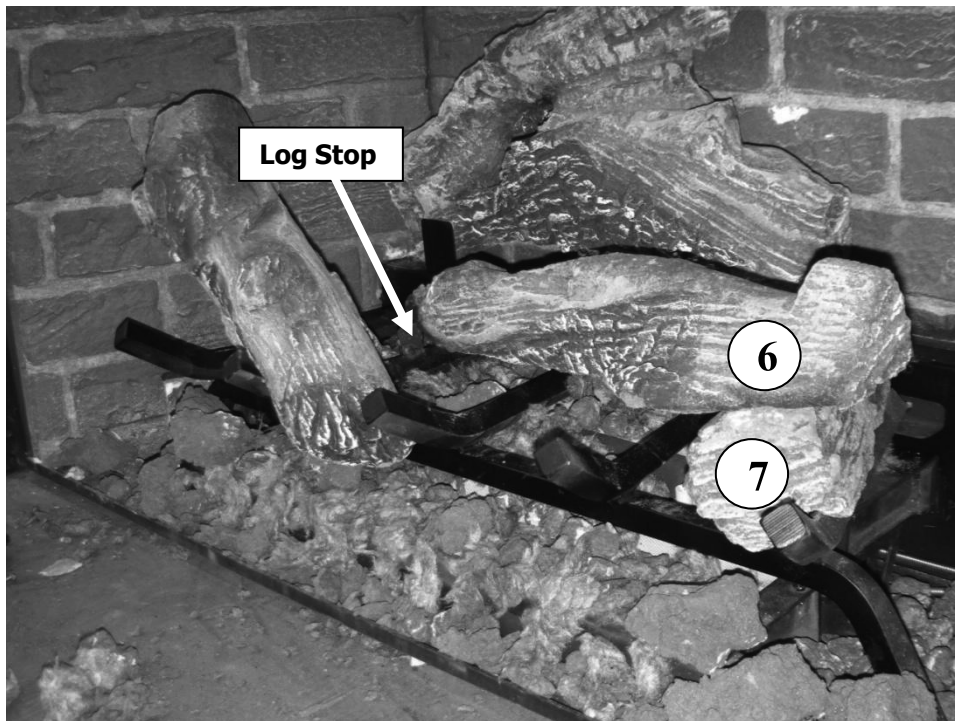
Rear Log Clip

Place Log # 1 on back ledge behind clip as shown.

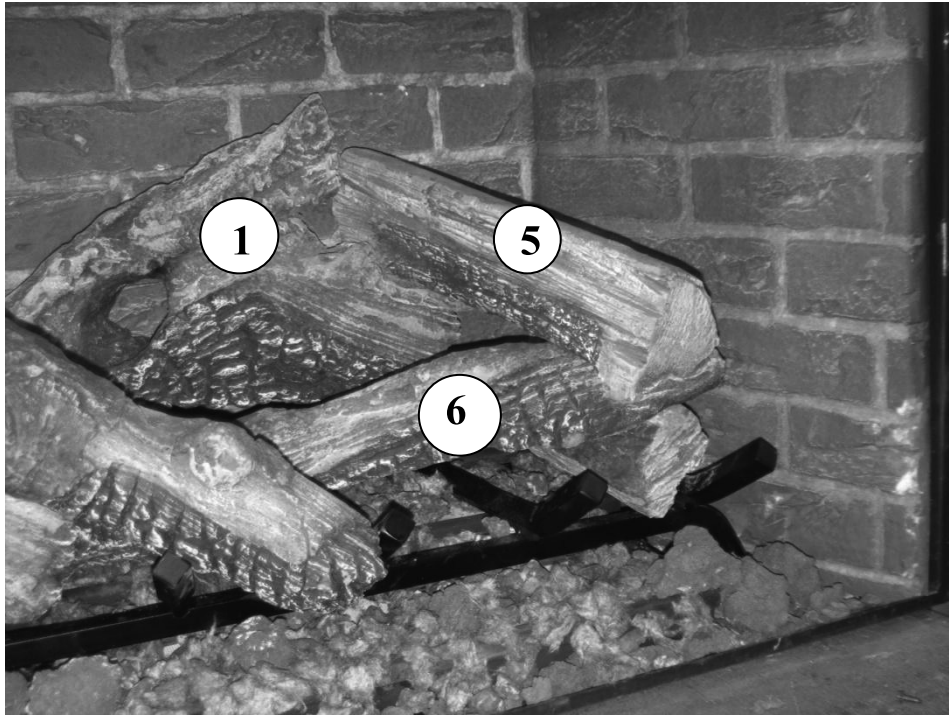




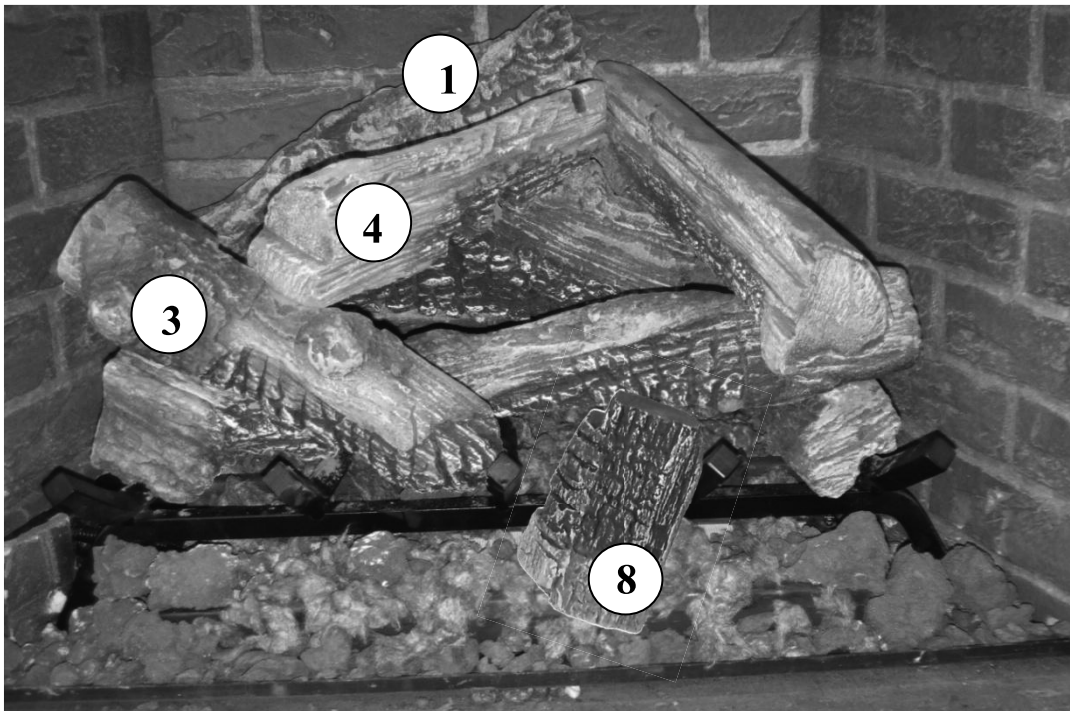
Place Log #7 on right Grate Tine with log groove resting on the tine.



Place Log #6 over pin on Log #7 with left end of Log #6 against back edge of Log Stop.



Place Log #5 on Log #6 & Log #1 in their notches.



Place Log #4 on top of Logs #1 & Log #3.

Place Log #8 in front of grate - approximately as shown.